

DFP4500 Pressure Transmitter



Features

- Integrated structure, no external adjustment required
- Reliable performance, safe and convenient to use
- With short circuit protection and reverse polarity protection
- Can measure gauge pressure, absolute pressure and sealed gauge pressure
- Cable outlet + rear end thread seal, used in explosion-proof environment
- Can be used in high temperature environments, The heat sink adopts a modular structure, and the number of heat sinks can be freely selected according to the ambient temperature of measurement.

Overview

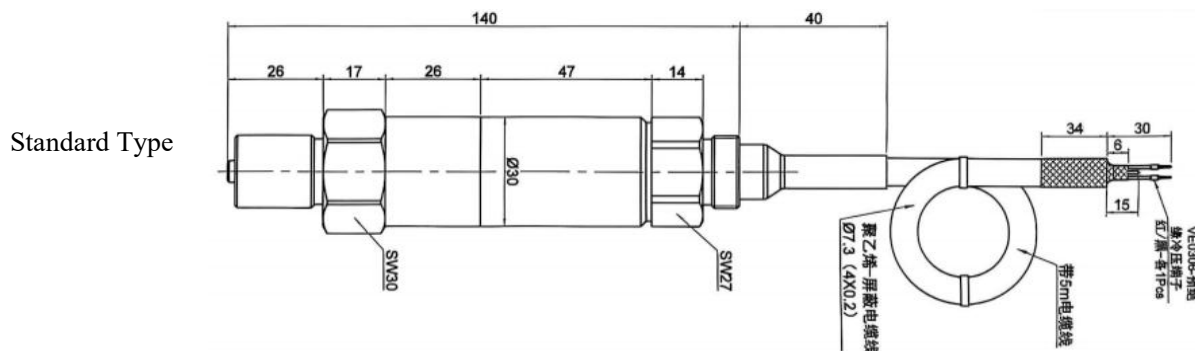
The DFP4500 type pressure transmitter is a zero point and full range output adjustable pressure transmitter developed and produced by our company. It uses high stability and high reliability pressure sensor and high performance transmitter dedicated circuit, the overall performance is stable and reliable. Widely applicable to the detection and control of fluid pressure in petroleum, chemical, power, hydrology, geology and other industries.

Technical Parameters

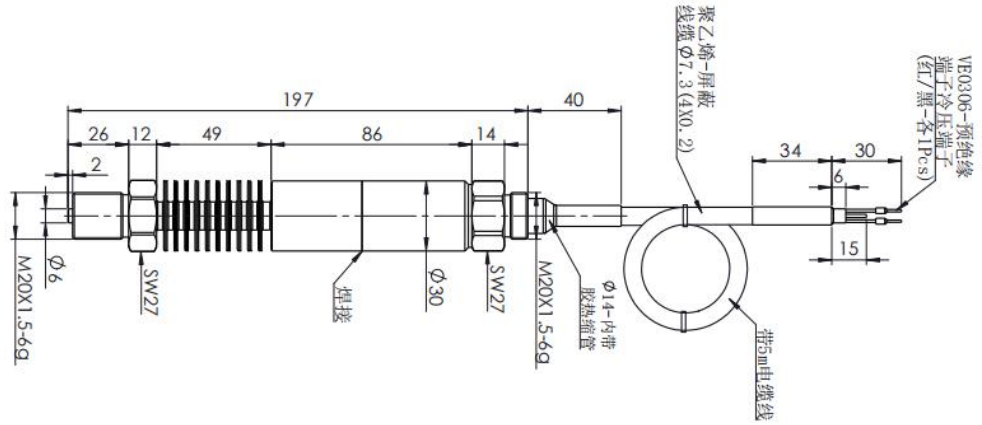
Pressure Parameters		
Measurement Range	-0.1MPa...0MPa~0.01MPa...60MPa	
Overload	2x full scale pressure or 110MPa (min)	
Pressure Type	Gauge pressure, absolute pressure, sealed gauge pressure	
Electrical Specifications		
Output Type	Current type	Voltage type
Power Supply	9~36V DC	10~30V DC
Output Signal	4mA ~ 20mA DC (2-wire system)	0... 1V ~ 5... 10V DC (3-wire system)
Pressure Type	$\leq (U-9) / 0.02A (\Omega)$	$\geq 10k$

Insulation Resistance	100M Ω @100V DC	
Structural parameters		
CASE	Stainless steel	
sensor	316L stainless steel	
sealing ring	Fluorine rubber	
Cable	Cable for Φ 7.5mm polyethylene	
IP Grade	IP68 (cable type)	
environmental parameter		
Media suitability	Various fluids without corrosion to 316L stainless steel and fluorubber	
Compensation Temperature	-10C~+80°C	
Operating Temperature	-30°C~+80°C	
Storage Temperature	-40°C~+125°C	
Performance		
Accuracy	\pm 0.25% FS (typical)	\pm 0.5% FS (max)
Zero Temperature Coefficient	0.03%FS/°C (\leq 100kPa) ; 0.02%FS/°C ($>$ 100kPa)	
Full temperature coefficient	0.03%FS/°C (\leq 100kPa) ; 0.02%FS/°C ($>$ 100kPa)	
LONG-TERM STABILITY STUDIES	\pm 0.3% FS/yr (max)	

Form Factor



High temperature resistant type



Electrical connection

Function definition	
Power Supply positive (+ V)	Red
Output positive (+ out)	Black

Selection Guide

DFP4500	Type Pressure Transmitter		
	Measurement Range	Measurement range: -0.1MPa... 0MPa ~ 0.01 MPa... 60MPa	
	[0-X] kPa or MPa	X: Actual Measurement Range	
		code	Output Signal
		E	4~20mA DC
		F	1V~5V DC
		J	0V~5V DC
		V	0V~10V DC
		structural material	
		code	Isolation diaphragm
		22	Stainless Steel 316L
		24	Stainless Steel 316L
			Interface
			Stainless steel
			Stainless Steel 316L
			CASE
			Stainless steel
			Stainless Steel 316L
		code	Outgoing Line Format
		C1B3	Cable connection, M20 × 1.5 male rear end connection
		C3B3	Cable connection, G1/2 male rear end connection
		C19B3	Cable connection, NPT1/2 male rear end connection
		code	Process connection
		C1	M20 × 1.5 male thread pressure interface, end face seal
		C2	G1/4 External Threaded Pressure Interface
		C3	G1/2 male thread pressure interface
		C5	M20 × 1.5 male thread pressure interface, water line sealing
		code	Pressure Type
		G	Gauge type
		A	Absolute pressure type
		S	Sealing gauge pressure
DFP4500 [0-10] MPa E 22 C1B1 C5 G Full Specification Model			